

THE ORIGINAL 'JOINTLESS' RUBBER TRACK

ADVANCED PREMIUM RUBBER COMPOUND FOR
INCREASED PERFORMANCE AND DURABILITY

**EXCAVATORS • SKIDSTEERS • ASV'S • PAVERS
LOADERS • CRAWLERS TRENCHERS**



WHY CHOOSE GTW?

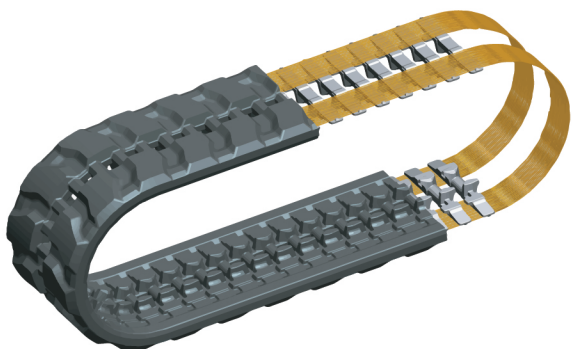
GTW IS A TRACK PIONEER

THE 'P' TRACK IS THE ORIGINAL
'JOINTLESS' RUBBER TRACK

CABLE QUANTITY AND POSITIONING

GTW tracks have continuously-wound cables right up to the edge.

Uniform placement for
added strength.



PREMIUM CABLE SYSTEM

Higher strand count for increased
tensile strength.

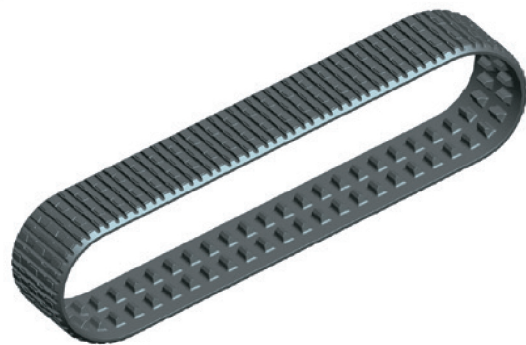
EXCAVATORS • SKIDSTEERS • ASV'S • PAVERS





PREMIUM RUBBER

Premium natural rubber formulation provides enhanced track durability and performance.



O.E.M. TRACK SUPPLIER

Our tracks are engineered for thousands of new and used machines

THE BEST PINS ON THE MARKET

The only major manufacturer using higher-grade pins for increased track strength.

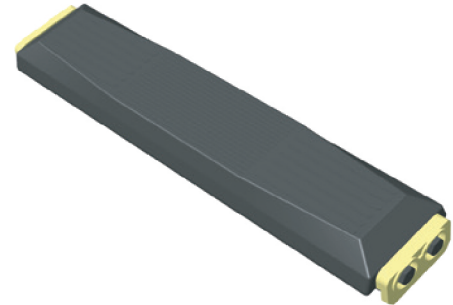




REINFORCED RUBBER TRACK PADS

CLIP-ON STYLE

Clip-on pads are perfect for maximizing machine flexibility, minimizing vibration, and reducing ground-disturbance.

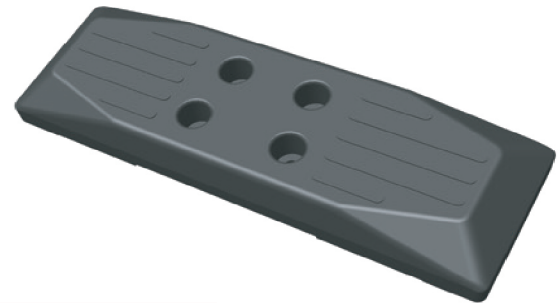


BOLT-ON STYLE

Extremely robust bolt-on fit to the tracks prevents movement of the pads.

CHAIN-ON STYLE

One-piece vulcanized pads that bolt directly on to the steel track chain.



FROM 200MM TO 800MM

PADS FOR THE MAJORITY OF MACHINES

ENGINEERED FOR THE CONSTRUCTION INDUSTRY



1-847-488-0988

info@globaltrackwarehouse.com

Bartlett IL, Milan TN, Pennsauken NJ, Boise ID

VER:ITNS202301USA

WWW.GLOBALTRACKWAREHOUSE.COM