



**GLOBAL TRACK WAREHOUSE**



# **PREMIUM AGRICULTURAL RUBBER TRACKS AND MID-ROLLERS**

TRACTORS • COMBINES • GRAIN CARTS





# TANK TUFF<sup>®</sup>

PREMIUM AGRICULTURAL RUBBER TRACKS



## One-Step Vulcanization

All TankTuff tracks are vulcanized with our one-step process. This ensures that there is no weak point where the tread bars and drive lugs bond to the track.



## Stronger Tread Bars

Our specially designed tread-bars, natural rubber compounds and one-step vulcanization process results in the strongest and most durable tread bars available.

## Reinforced Drive Lugs

The combination of the one-step process and our armor strengthened lug system ensures your tread lugs do not tear and are less prone to wear than the competition.



## Premium Natural Rubber Compounds

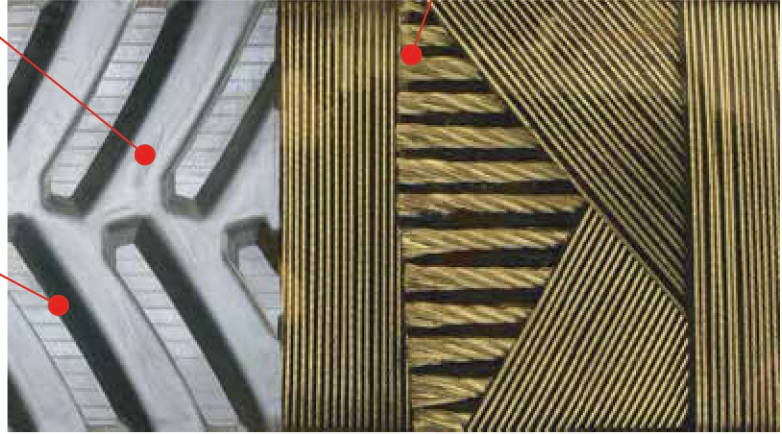
TankTuff uses only premium quality materials and solutions resulting in a rubber track with significant durability.

## Strongest Cable System

Up to 5.4mm plus High Tensile Main Cable, four additional steel cable layers plus two additional fabric layers enables TankTuff to achieve remarkable strength.

## Specially Designed Tread Bars

Our tread bars are designed to increase traction and clean out while reducing ground disturbance and vibration.

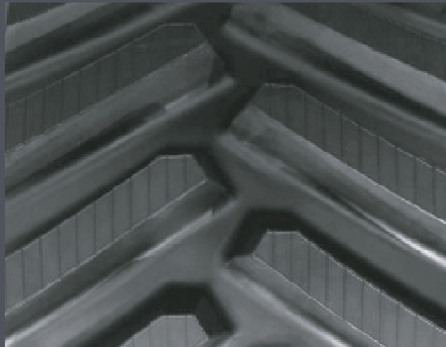


**Our TankTuff Mid-Rollers are now available for a wide range of machines.**

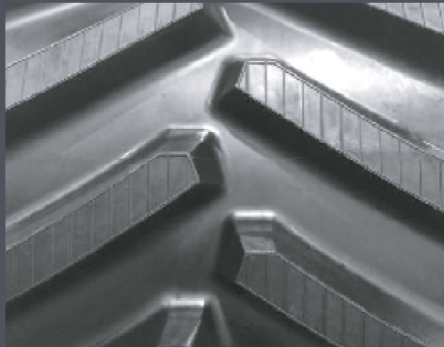
- New Mid-Rollers
- No Core Exchange
- Injection Molded
- Heat Resistant
- Natural Rubber
- Extend Track Life



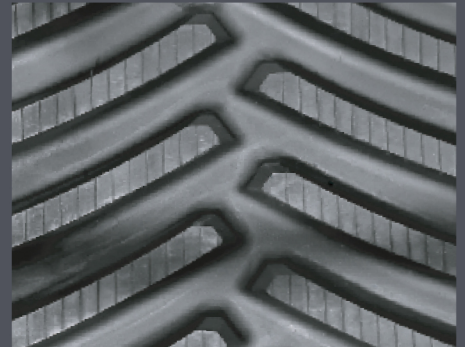
# POPULAR SIZES & TREAD PATTERNS



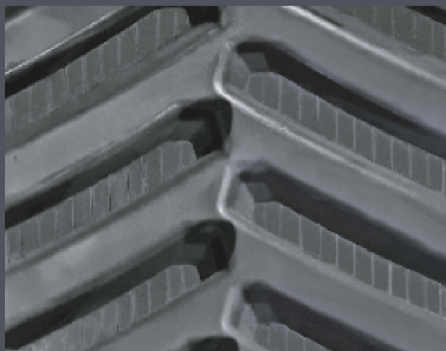
**30" 8RT**



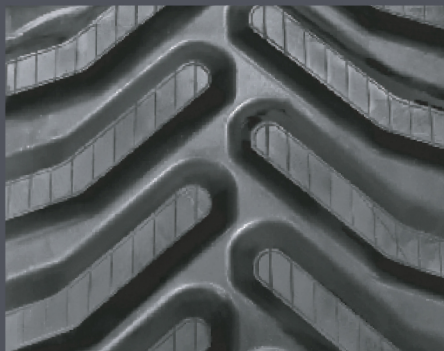
**30" 9000T**



**36" 9RX**



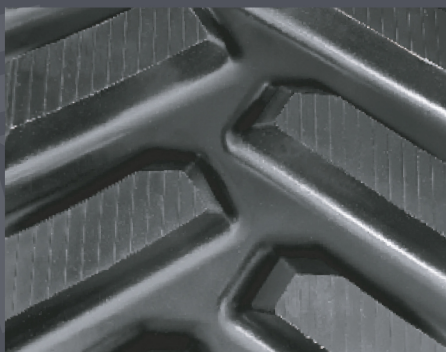
**24" 35/34/55**



**24" MT700**



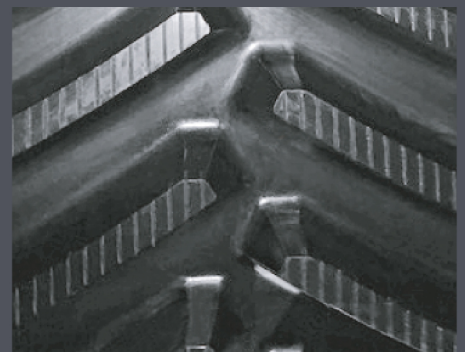
**30" MT800**



**18" ROWCROP**



**30" QUADTRAC**



**35" HARVESTER**



**GLOBAL TRACK WAREHOUSE**

1-847-488-0988

[info@globaltrackwarehouse.com](mailto:info@globaltrackwarehouse.com)

Bartlett IL, Milan TN, Pennsauken NJ, Boise ID

VER:ATNS202301USA

[WWW.GLOBALTRACKWAREHOUSE.COM](http://WWW.GLOBALTRACKWAREHOUSE.COM)